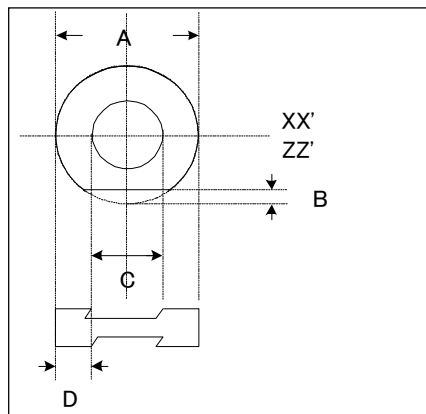


**INVERTED MESA BLANK SPECIFICATION**  
**(ROUND TYPE)**

<b>1 Cut</b>	<u>AT</u>
<b>2 Orientation</b>	
ZZ' Angle( $\Theta$ )	<u>35</u> Deg. <u>        </u> min. <u>        </u> sec. $\pm$ <u>        </u> sec.
XX' Angle( $\Phi$ )	<u>0</u> Deg. <u>0</u> min. <u>0</u> sec. $\pm$ <u>        </u> min.
<b>3 Dimension</b>	
Diameter A;	<u>        </u> mm + <u>        </u> mm - <u>        </u> mm
Ref. Flat . On	<u>        </u> Axis
Flat Orientation	<u>        </u> deg
Flatness B;	<u>        </u> mm + <u>        </u> mm - <u>        </u> mm
Mesa Diameter C;	<u>        </u> mm + <u>        </u> mm - <u>        </u> mm
Mesa Ring D;	<u>        </u> mm + <u>        </u> mm - <u>0.100</u> mm



<b>4 Frequency</b>	
Nominal Frequency	<u>        </u> MHz
Mesa Frequency	<u>        </u> MHz $\pm$ <u>        </u> kHz
Overtone	<u>        </u>
Sorting	<u>        </u> KHz groups
Mesa Ring Frequency	<u>22.000</u> MHz $\pm$ <u>1</u> MHz

**5 Surface finish** Polish, Mesa Etched

**6 Material** Low Etch Channel

**7 Etch Channel** None in Mesa Area

**8 Q Value** Minimum 2.4 million

**9 Remark**

**AATA JAPAN CO.,LTD.**

INT'L TEL No.81-45-662-0533  
INT'L FAX No.81-45-681-4349  
URL: <http://www.aatajapan.co.jp>  
E-mail:aata-jap@pluto.dti.ne.jp