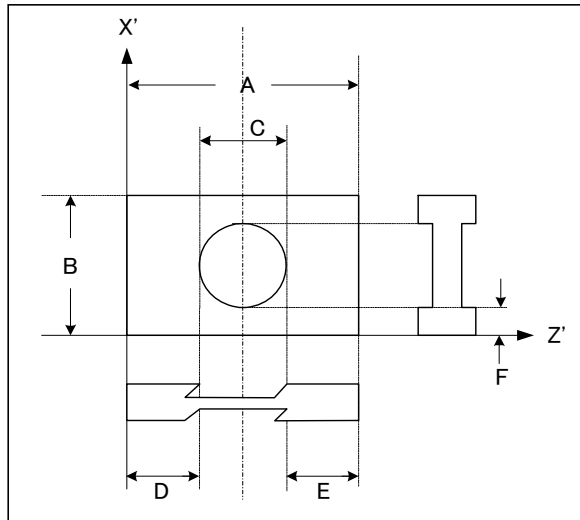


**INVERTED MESA BLANK SPECIFICATION**  
**(UNPLATED RECTANGULAR (STRIP) TYPE)**

**1 Cut** AT

**2 Orientation**  
 ZZ' Angle( $\Theta$ ) 35 Deg.      min.      sec.  $\pm$       min.  
 XX' Angle( $\Phi$ ) 0 Deg. 0 min. 0 sec.  $\pm$       min.

**3 Dimension**  
 Width A (ZZ');      mm +      mm -      mm  
 Length B (XX');      mm +      mm -      mm  
 Mesa Diameter C;      mm +      mm -      mm  
 Mesa Ring D;      mm +      mm -      mm  
 Mesa Ring E;      mm +      mm -      mm  
 Mesa Ring F;      mm +      mm -      mm



**4 Frequency**  
 Mesa Frequency      MHz  $\pm$       kHz  
 Overtone       
 Sorting      KHz groups  
 Mesa Ring Frequency 22.000 MHz  $\pm$  1 MHz

**5 Surface finish** Polish, Mesa Etched

**6 Material** Low Etch Channel

**7 Etch Channel** None in Mesa Area (Mesa Area)  
Grade 4 (ref. IEC 75) (Other Area)

**8 Q Value** Minimum 2.4 million

**9 Remark** Flatness: Within 1light band (Newton Ring)  
 Inclusion Grade I b (ref. IEC 75)

**AATA JAPAN CO.,LTD.**

INT'L TEL No.81-45-662-0533  
 INT'L FAX No.81-45-681-4349  
 URL: <http://www.aatajapan.co.jp>  
 E-mail:aata-jap@pluto.dti.ne.jp