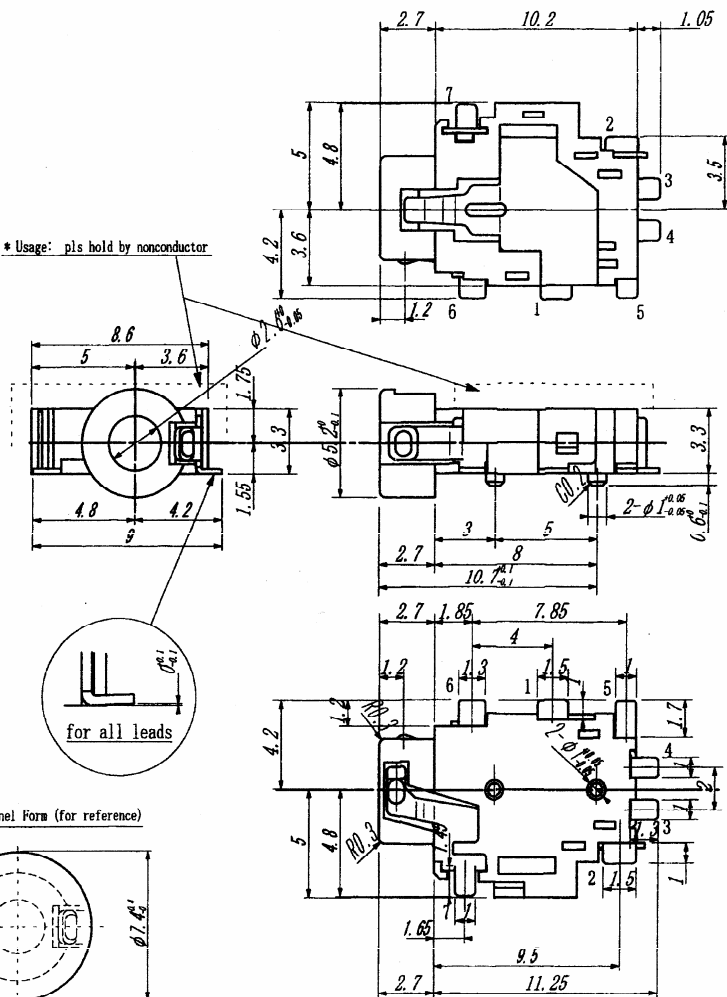
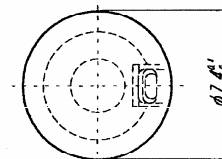


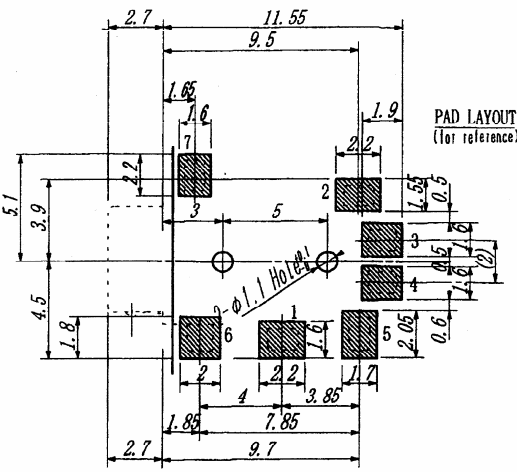
* Usage: pls hold by nonconductor



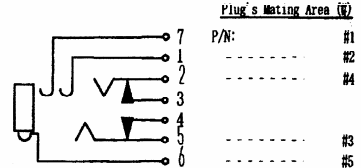
The Front Panel Form (for reference)



AVAILABLE PLUG:
Standard 2.5mm 2P/3P/4P(Ring type)/4P(Straight type)/5P Plug




PAD LAYOUT
(for reference)



* Changed from Tin/Lead to Sn on July 24th, 2002

#	PART NAME	QTY	MATERIAL	PLATING	REMARKS
	BODY	1	PA6T (NYLON)		BLACK (UL94V-0)
2	MAIN TERMINAL A	1	CTR-M 0.3t	Ag	(TIP CONTACT)
5	MAIN TERMINAL B	1	PBSR-H 0.2t	Ag	(RING CONTACT)
3	FIX TERMINAL A	1	BsR2-H 0.25t	Ag	
4	FIX TERMINAL B	1	BsR2-H 0.25t	Ag	
1	EARTH TERMINAL	1	PBSR-H 0.2t	Sn *	(SLEEVE CONTACT)
6	OUTER RING T.	1	PBSR-H 0.2t	Au	(OUTER RING C.)
7	ROOT CONTACT	1	CTR-H 0.25t	Au	(ROOT CONTACT)

MODEL NAME.	2.5mm STEREO(5P) JACK	UNIT	mm
TYPE NO.	ATMP-J48(ROHS)	TOL.	+/-0.3
 CRYSTAL PRODUCTS, ELECTRONIC PARTS & METALLIC MATERIAL		DATE	04/20/2001
		VER.	003